

Anticipate More





## Anticipate more opportunities

Well-being comes as naturally as friendship, relaxation takes the place of responsibilities you'd rather not tend to, and doing what you're passionate about makes daily living more meaningful.

Spend your morning swimming laps in our heated pool or just enjoy coffee and morning birdsong from your balcony or patio. Head to your balance and flexibility class at the Well-Being Center or book a personal training session. Your life at RiverWoods brings new opportunities and experiences of your own design – including plenty you never anticipated.

And when friends and family come to visit, watch the sunset along the breathtaking Susquehanna River, stroll the classic grounds of Bucknell University, or explore the unique boutiques and architecture of historic Lewisburg, Pennsylvania. There's plenty to do on-campus and off!

At RiverWoods, you can enjoy nature's beauty on our bucolic 108-acre campus – and more time to explore the regional offerings that surround you.

It's time to anticipate more.





## Make yourself at home.

Make choices. That's what it means to be independent. And that's why you can anticipate more choices at RiverWoods.

Dining, for example. Enjoy casual dining with delicious, seasonal options at RidgeCrest Restaurant. Visit one of downtown Lewisburg's many restaurants and pubs or make an old favorite in your own kitchen. Our dining plan is flexible, and the choices are always yours.

And residential living? Again, your choice. Is a one-bedroom apartment just right or do you prefer two? Balconies and patios ensure private spaces to read on a sunny day. Choose your preferred floor plan and finishing touches that reflect your style. Enjoy the space and privacy that a Garden Cottage affords with the warm feeling that comes from being part of a friendly, supportive neighborhood.

Leave the home maintenance to us. Instead, spend your time on what you love. Why not explore a class, program, or club here on campus – many created by the RiverWoods residents whose own interests have helped shape this community.

Relax. We'll take care of the chores, while you make yourself at home.





## Content and confident, you're leaving ordinary life behind.

Your new home brings the confidence of knowing you have a plan in place for whatever challenges life may bring. And that makes RiverWoods more than just a senior living community.

Just minutes from Lewisburg with its historic and cultural attractions, including Bucknell University, RiverWoods offers a beautiful location that opens an exceptional range of possibilities for a new chapter in living. As a continuing care retirement community, we design programs and create opportunities to strengthen well-being and independence – but offer an on-site continuum of services to meet changing needs.

- Personal care
- Memory care
- Skilled nursing
- Pharmacy services
- Post-acute and outpatient rehabilitation





## Life gets simpler – and much more rewarding

Without home maintenance headaches, you now have the time to do what you want to do, not what you have to do. Find the pace that suits you, and experience the expansion of opportunities and friendships that come with community living.

Soak in the outdoors during a bike ride along the Buffalo Valley Rail Trail or water tubing along the Susquehanna. Our community gardens are perfect for green thumbs or just brighten your porch with your favorite flowers. Take your friends to RidgeCrest Restaurant for prime rib or keep it simple with wine and cheese on your patio.

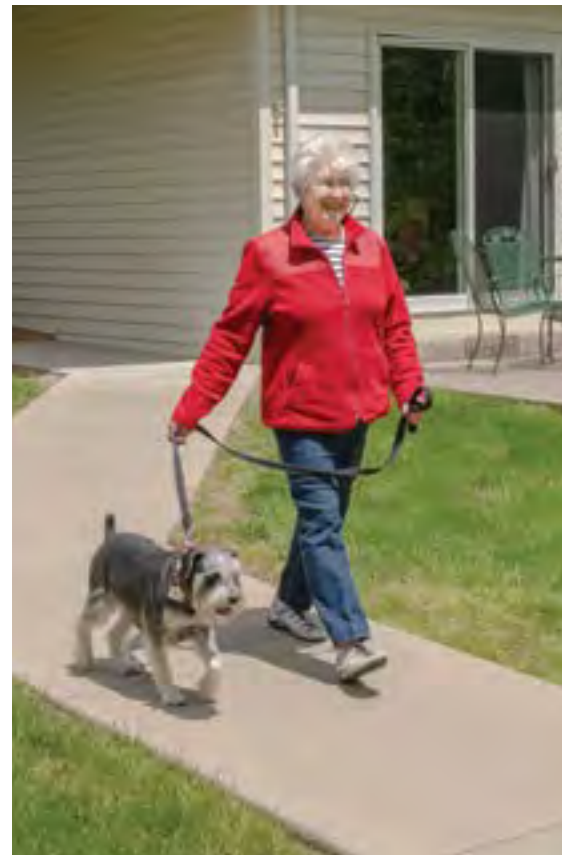
Our spacious campus with mature trees and walking paths is the perfect place for a brisk walk or leisurely stroll. You'll find opportunities to volunteer and engage in lifelong learning on and off campus. Enjoy the lifestyle that comes from a community of engaged, like-minded people.

## A Life Well Lived

Well-being informs everything we do – from classes focusing on flexibility, balance, and strength; to our brain health program and coach; social events and volunteer opportunities; to unique resident clubs, cultural events, and lifelong learning classes; and so much more.

Being part of a friendly, supportive community is key to the peace of mind that reduces stress and creates a healthier mind and body as we age.

In 2023, Northwestern University and Mather Institute completed their 5-year Age Well Study of more than 8,000 residents of continuing care retirement communities. Overall, residents reported greater emotional, social, physical, and intellectual wellness than their peers, and 70% reported that moving “greatly improved” their social wellness.





## The tradition inspires the future.

As Lewisburg, Pa.'s leading not-for-profit senior living organization, RiverWoods is the evolution of a 100-plus year legacy of quality services for seniors in the Susquehanna Valley. In 1916, area church leaders established the United Evangelical Home on 108 acres that now comprise RiverWoods continuing care retirement community. Today, RiverWoods proudly welcomes people of all cultures, backgrounds, and faiths, including those with no religious affiliation.

RiverWoods is part of Asbury, a not-for-profit organization managing multiple CCRCs and serving thousands of seniors. Founded in 1926, and rooted in Methodism-founder John Wesley's admonition to "Do all the good you can," the Asbury spirit of service infuses the operation of all its communities — and inspires our way into the future.

Call (570) 522-6234 or visit [RiverWoods.org](https://www.RiverWoods.org) for more information.



## Glossary | Become familiar with the terminology of senior living.

**Benevolent Care.** Benevolent Care. As part of Asbury Communities, RiverWoods residents have access to the Asbury Foundation's benevolent care program, which assists residents who outlive their financial resources through no fault of their own. Benevolent care can be used to cover housing and medical expenses and is an important part of our Mission of doing all the good we can for those we serve.

**CCRC or Continuing Care Retirement Community.** A CCRC, sometimes called a LifePlan community, is a senior living community that provides a long-term contract between the resident and the community. This contract ensures that residents will have access to a continuum of Well-being and lifestyle services, housing services, and health care, all on one campus. RiverWoods includes residential living for independent seniors, personal care, secure memory care, rehabilitative and skilled nursing care, and home care.

**Continuum of Care.** A reference to the health care and home care services available on campus that support and supplement residential living.

**Entrance Fee.** The one-time, upfront payment that provides for residency in a CCRC and ongoing campus maintenance and enhancements.

**Independent Living.** See Residential Living.

**Monthly Service Fee.** Determined by the size of the residence chosen, this fee covers common costs associated with residency, including campus amenities, home maintenance, utilities, and emergency response.

**Not-for-Profit.** A status of ownership where the organization is governed by a community-based board of trustees. Board members ensure a not-for-profit CCRC's approach to serving seniors meets local needs and operates in accordance with its Mission. Not-for-profit communities turn surplus income back into community improvements and service expansions and operate according to a Mission of serving others.

**Personal Care.** Often called assisted living, personal care is a special combination of housing, personalized supportive services and health care designed to meet the needs — both scheduled and unscheduled — of those who need help with daily living activities.

**Residential Living.** A healthy, active, engaged lifestyle for independent seniors.

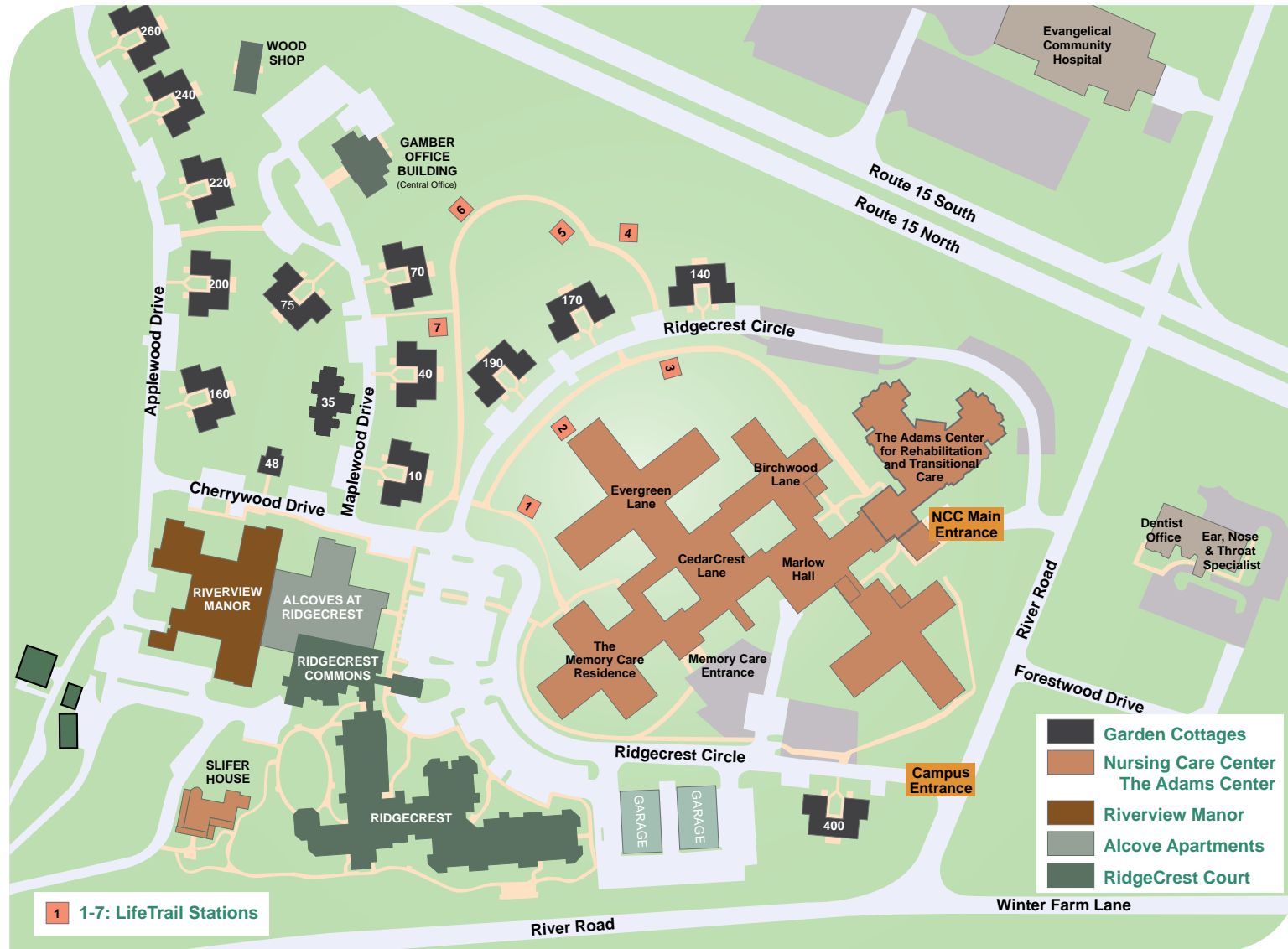
**Second-Person Fee.** With fee structures built around single occupancy of a residence, two residents can expect a second-person fee to cover the additional costs associated with living here.

**Services & Amenities.** The programs, special features, and places such as dining venues, Well-being centers, etc., provided by the community to enhance the residents' living experience.

**Skilled Nursing.** 24-hour care for residents with medical needs that require specialized medical attention and assistance with ambulation. Residents usually rely on assistance for most or all daily living activities. Regular medical supervision.



## RiverWoods Campus Map



## Entrance Fee Plans

**Your one-time entrance fee** – paid when you sign a contract with RiverWoods – guarantees your residence and access to services for your lifetime. No matter which Entrance Fee Plan you choose, you have the security of knowing that health care services are available to you. And, you have access to the Asbury Foundation's Benevolent Care program, which assists residents who outlive their financial resources through no fault of their own.

**Why charge an entrance fee?** Even though your residence here is maintenance-free, the community is not. Entrance fees help provide capital funds for upkeep, enhancements, and the wide range of services, programs, and staff that a well-run community requires. RiverWoods is part of Asbury Communities, which is approaching its 100<sup>th</sup> year in aging services. With Fitch-rated bonds and strong reserves, Asbury's financial strength is an important benefit we bring to residents.

**Standard Plan:** Entrance fees are partially refundable during the first 50 months you live at RiverWoods. The refund decreases by a percentage each month of residency, until after 50 months, when there is no refund. Because this plan offers the lowest entrance fees, it is the most affordable way to enjoy the RiverWoods lifestyle.

**50% Refundable Plan:** With this plan, you receive half your entrance fee, payable to you or to your estate, at the time you are no longer a resident at RiverWoods and have satisfied the terms of the Residency Agreement.\* This plan guarantees a partial refund of your investment in return for a larger up-front entrance fee.

*\*Generally, the entrance fee is refunded when your residence is re-occupied by a resident who pays a new entrance fee. Specific terms are contained in the Residency Agreement.*

## Services & Amenities Included in Monthly Fee

- Maintenance and lawn care
- Property taxes
- RidgeCrest Restaurant
- Aquatic & Fitness Center
- Brain Health program
- Community Lounge areas
- Library
- Salon services
- Social, cultural, and educational events
- Spiritual programs and religious services
- 24/7 emergency response system
- Care navigation
- Apartments include utilities with the exception of telephone and WiFi
- Garden Homes monthly fee does not include water, sewer, phone, and utilities.



## About Asbury: A Legacy of Service

Since 2019, RiverWoods has been a member of the Asbury Communities family of senior living communities and diversified aging services.

From its founding as a Methodist home for the aged in Gaithersburg, Md., in 1926, we have dedicated ourselves to fostering well-being and expanded possibilities for the thousands of older adults we serve in Maryland, Delaware, and Pennsylvania.

Asbury is a separate legal entity from the United Methodist Church, but we continue to honor our faith-based heritage with a focus on Mission and adherence to our guiding principle of doing all the good we can with integrity, transparency, and grace.

**At Asbury, Anticipate More is not just a tagline.  
It's a promise we've been keeping for close to 100 years.**

## Commitment to Excellence and Innovation

The Asbury organization is committed to our Mission of exploring possibilities to live our best lives. Our Senior Leadership Team and Board of Directors prioritize smart growth, innovation, and financial strength and stewardship.

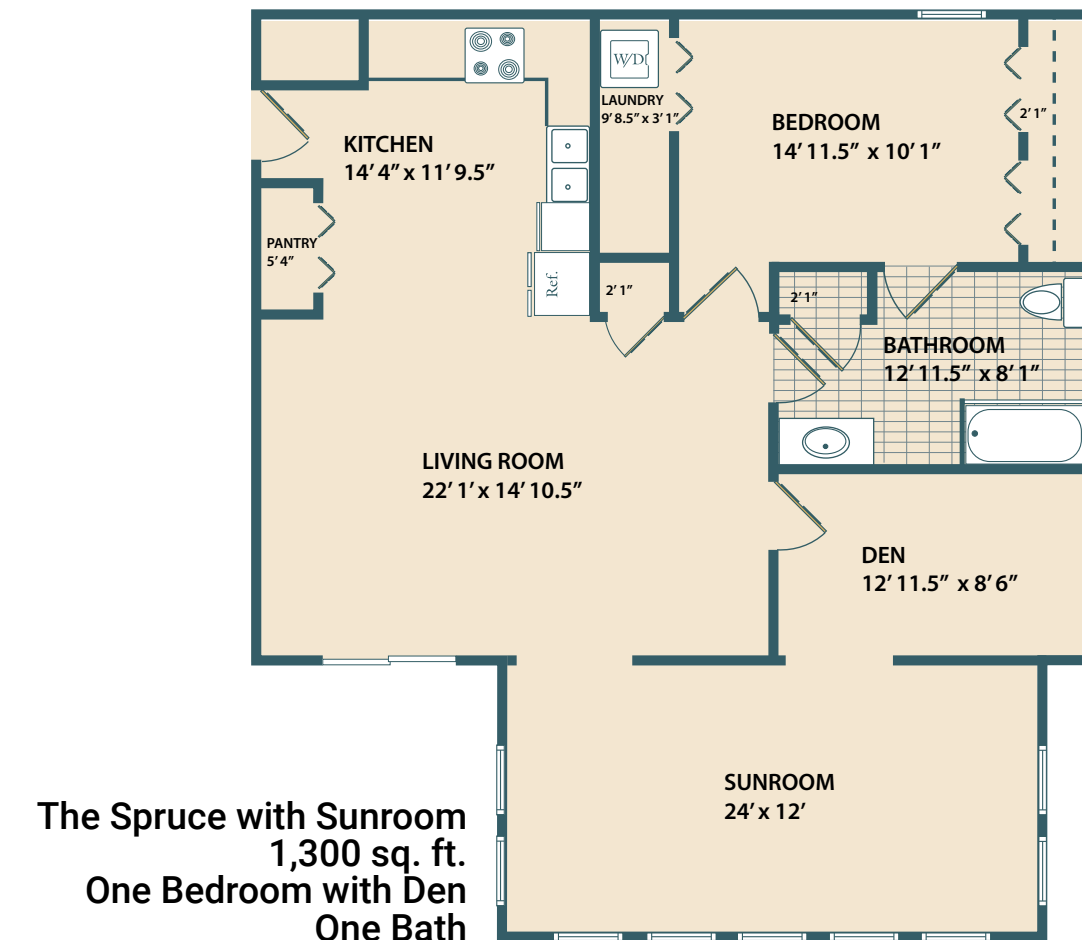
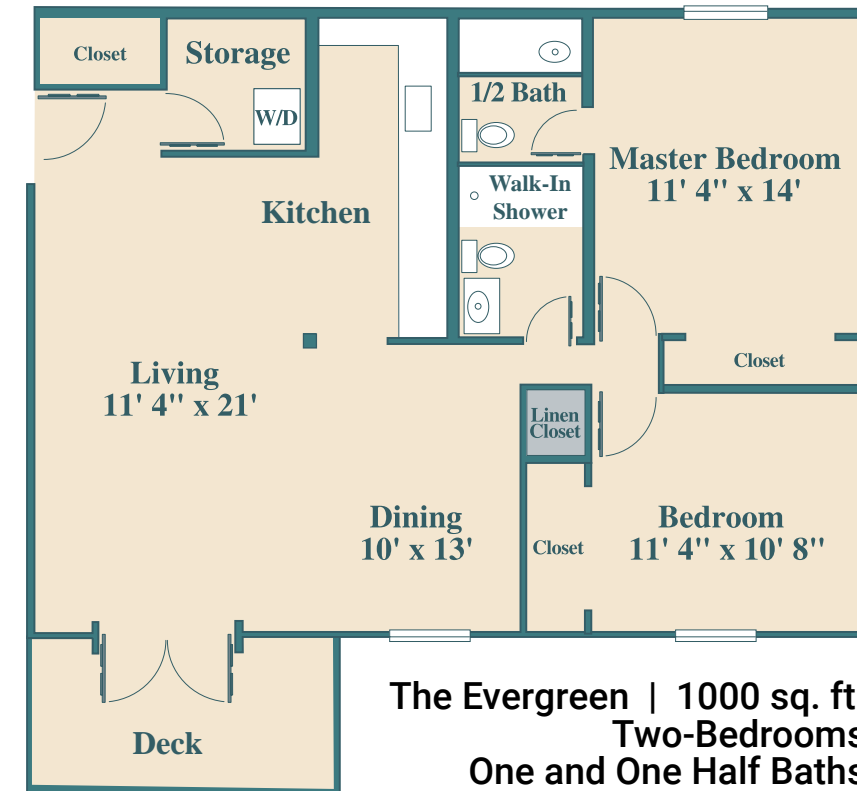
We are proud to hold EAGLE Accreditation through the United Methodist Association of Health and Welfare Ministries.

Some recent accomplishments across our system of senior living communities and diversified aging services include:

- Great Place to Work Certification (2023-2017)
- International Council of Active Aging Awards (2023)
  - #1, #8, #17 in Top 25 Senior Communities for Wellness
  - Top 5 Wellness CEOs
- U.S. News & World Report Best Nursing Homes (2024, 2023, 2022)
- Fortune Top 20 Workplace for Aging Services (2020)
- SAGECare LGBTQ Platinum Accreditation (2019)
- EAGLE Innovation & Best Practice Awards (2018, 2019)

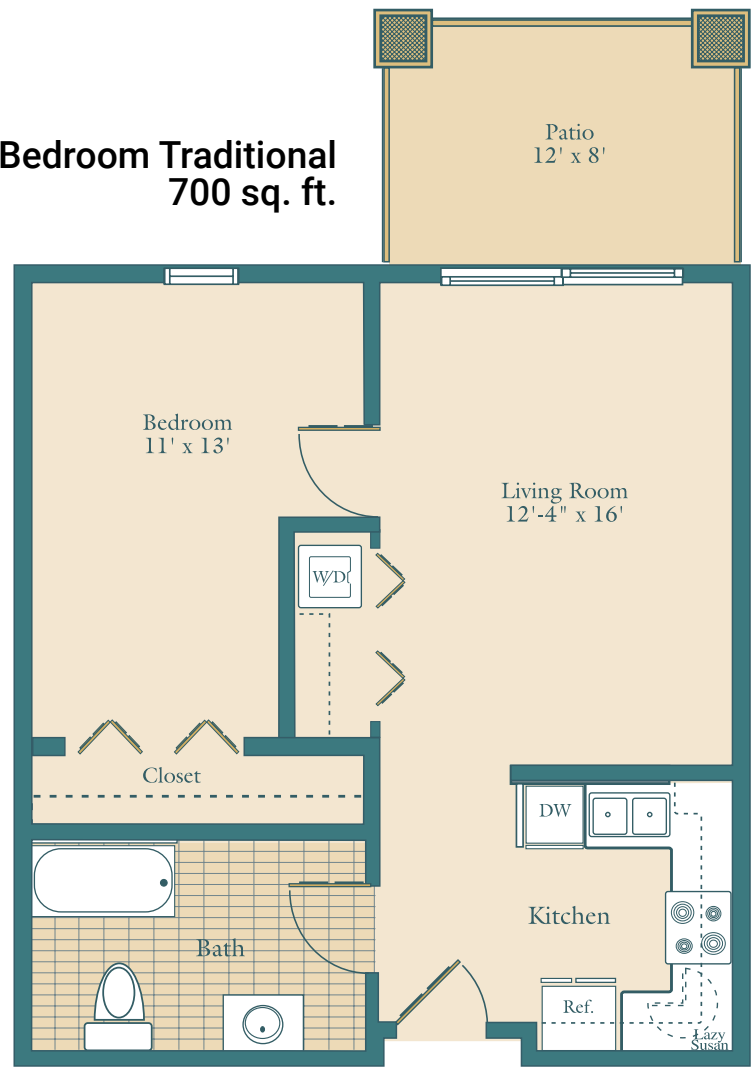


## Floor Plans

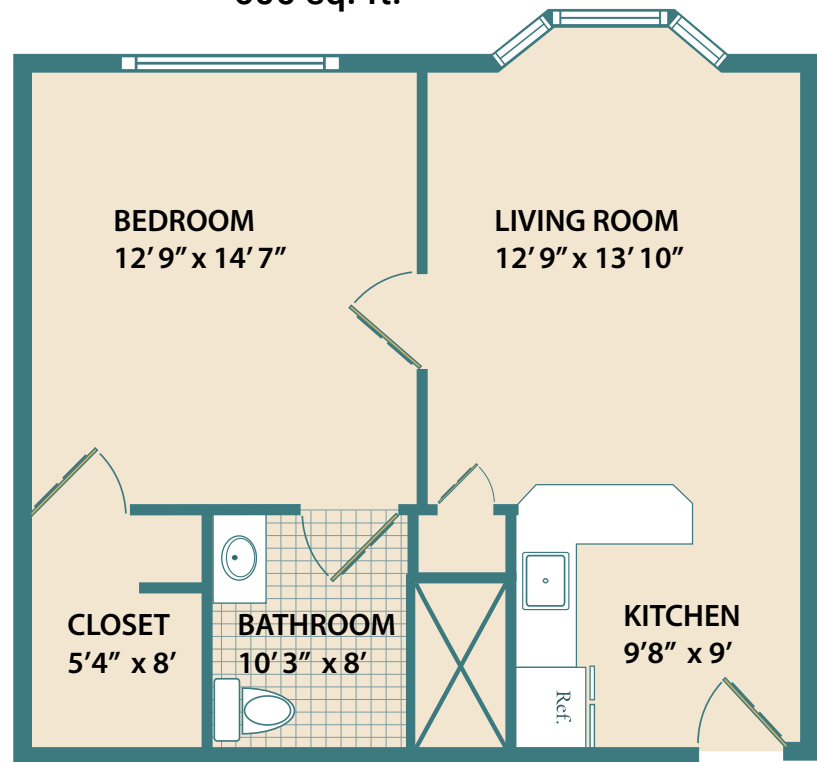




One-Bedroom Traditional  
700 sq. ft.



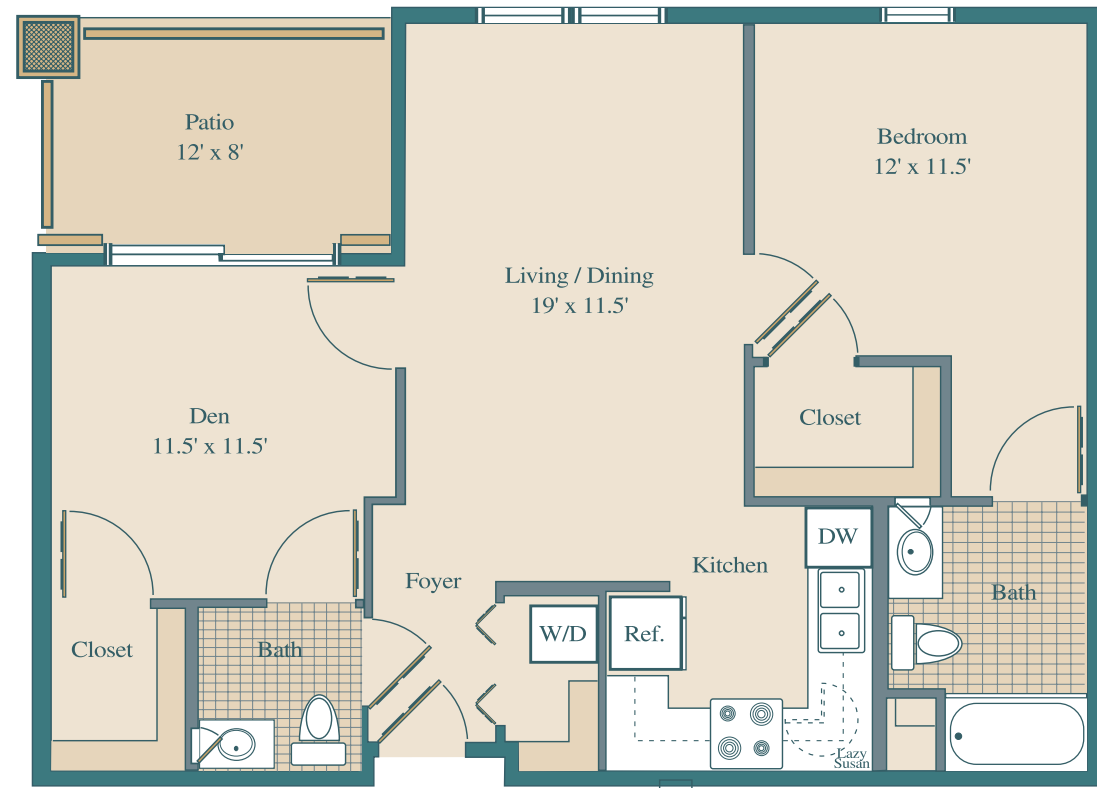
One-Bedroom Alcove  
600 sq. ft.



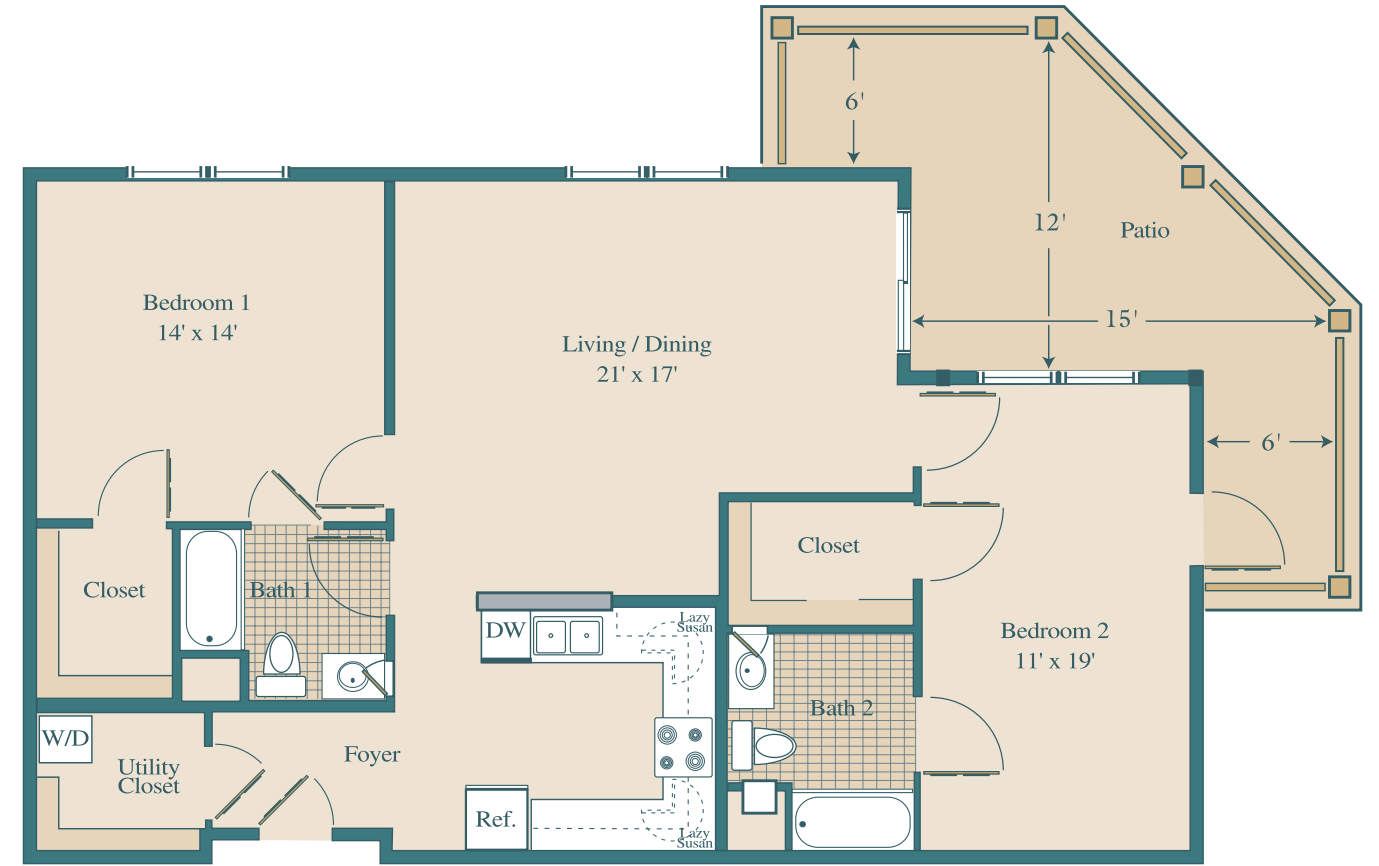
900 sq. ft.



One-Bedroom with Den



800 sq. ft.





1,200 sq. ft.

Two-Bedroom Wrap-Patio





 **ASBURY**  
**RIVERWOODS**   
Anticipate More

RiverWoods  
270 RidgeCrest Circle  
Lewisburg, PA 17837

Marketing: (570) 522-3848  
Reception: (570) 522-6234

