

ASBURY  
BETHANY  
VILLAGE



Anticipate More

Anticipate More

## Anticipate more opportunities.

Let living well come as naturally as laughter, relaxation take the place of responsibilities you'd rather not tend to, and see how new adventures and opportunities make your days more meaningful.

Go snow tubing in winter and enjoy water tubing and root beer floats in summer. Volunteer. Strengthen and tone in our Wellness Center and pool. Your life here can be an endless series of rewarding experiences of your own design plus many you never anticipated.

When friends and family come to visit, there's something for everyone. History buffs will love Gettysburg as much as the grandkids will be thrilled to visit Hershey Park and Chocolate World. Our proximity to Washington, D.C. and Philadelphia make travel easy. Great cultural offerings and restaurants abound.

It's the convenience and fun of central Pennsylvania living.

It's time to anticipate more.



## Make yourself at home.

Make choices. That's what it means to be independent.

And that's why we give you so many choices.

Dining, for example. Love to cook? Try out a new recipe on new friends. Mark your calendar for our resident-organized brunches with delicious, delightful themes. Drop by the Collegiate Café after yoga for fresh fruit and a club sandwich. Dining at Bethany Village is as flexible as you are.

And residential living? Again, your choice. Enjoy the convenience and sociability of apartment living with bright, open floor plans and finishing touches you choose. Take your dog for a walk along the friendly streets of your new tree-lined East Cottage neighborhood. Brighten the patio of your West Cottage with pots of flowers and let our groundskeeping crew take care of everything else.

Maintenance is provided, of course. Because who wouldn't rather spend their time choosing from enriching, entertaining activities – many created by the residents who bring their own fascinating experiences and backgrounds to Bethany Village.

So go on. We'll take care of the chores, while you make yourself at home.



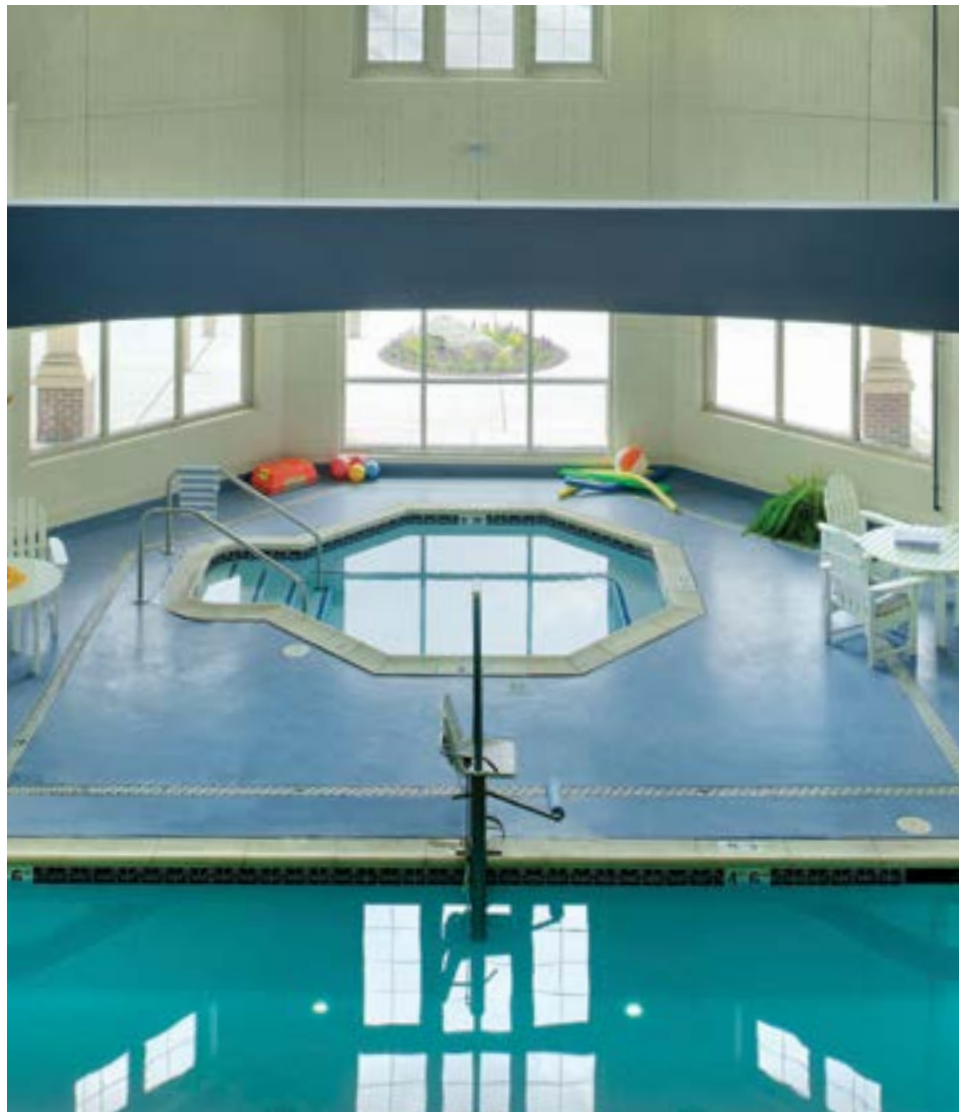


## Content and confident, you're leaving ordinary life behind.

Just 20 minutes from the state capital and two hours from the nation's capital, Bethany Village's 184-acre campus offers a beautiful location that opens an exceptional range of possibilities for retirement living. We provide you a lifetime of living well with services to meet any future health care needs right here on our campus:

- Residential Living
- Assisted Living
- Memory care
- Skilled nursing
- Short-term rehabilitation

Our location offers a fun-loving, vibrant lifestyle coupled with the confidence of knowing you have a plan in place for the future.



## Life gets simpler — and much more rewarding.

Without home maintenance headaches, you now have the time to do what you want to do, not what you have to do. Find the pace that suits you, and experience the expansion of opportunities and friendships that come with community living.

Join the community's miniature golf league and find out if you have what it takes to be a champion. Join the Model Railroad Club and help maintain our extensive displays honoring the region's railroad legacy. Audit college courses at a nearby college or learn without leaving our campus at our Venture lecture series.

Our proximity to famed Civil War sites, Catoclin Mountain trails, and the scenic beauty of Pennsylvania Dutch Country make for plenty of day-trip choices. Closer to home, walk or cycle around our tree-lined campus, keep your green thumb going in our community garden, or volunteer on campus. In short, enjoy the active, purposeful lifestyle that comes from a community of engaged, like-minded people.

## A Life Well Lived

Well-being informs everything we do – from classes focusing on flexibility, balance, and strength; to our brain health program and coach; social events and volunteer opportunities; to unique resident clubs, cultural events, and lifelong learning classes; and so much more.

Planning for friendship and support as you age is key to the peace of mind that reduces stress and creates a healthier mind and body.

In 2023, Northwestern University and Mather Institute completed their 5-year Age Well Study of more than 8,000 residents of continuing care retirement communities. Overall, residents reported greater emotional, social, physical, and intellectual wellness than their peers, and 70% reported that moving “greatly improved” their social wellness.



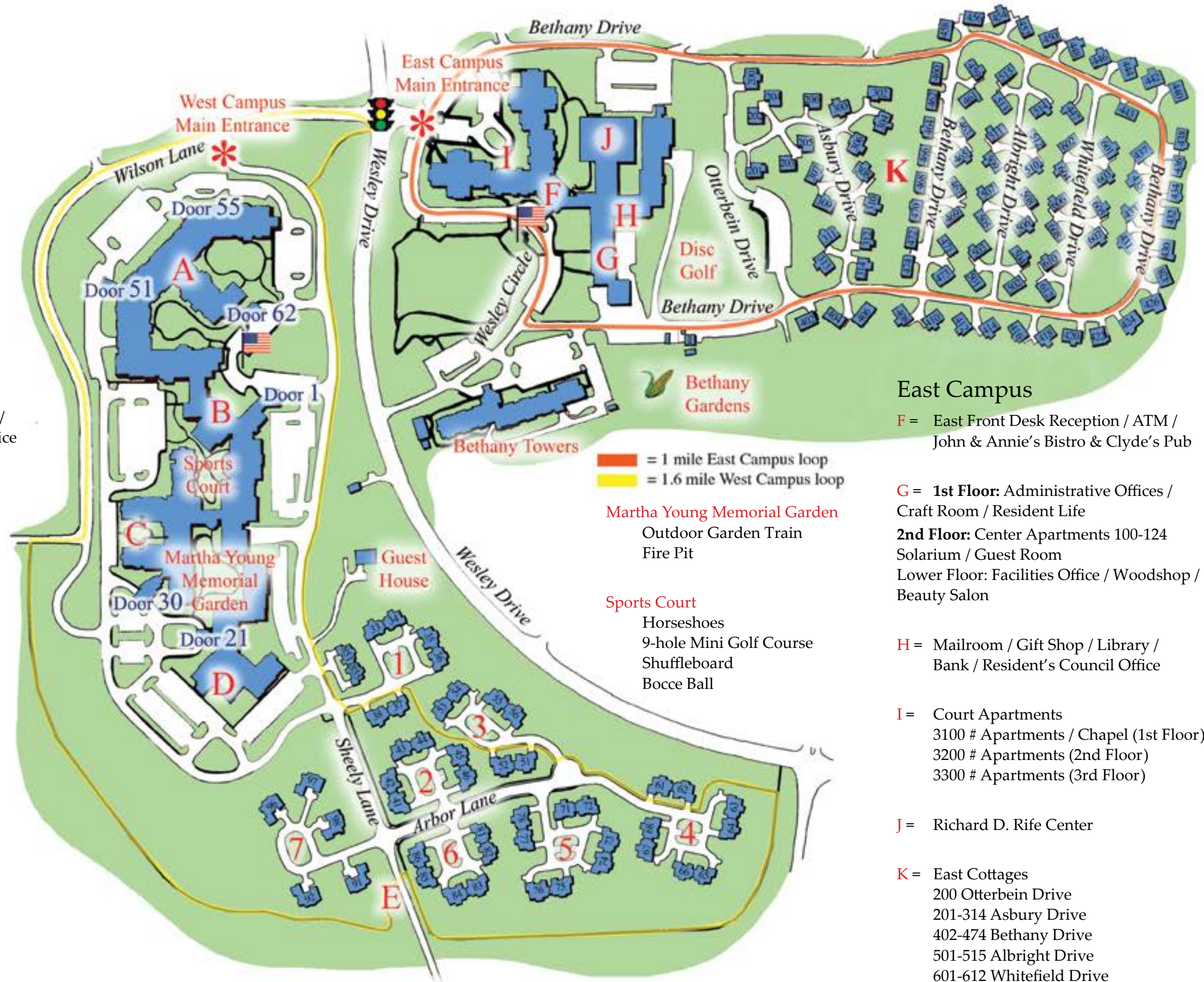
# Bethany Village Community Map

325 Wesley Drive  
Mechanicsburg, PA 17055  
(717) 766-0279  
www.BethanyVillage.org



## West Campus

- A** = West Apartments (Doors 51, 55 & 62)  
1100 # Apartments (1st Floor)  
2100 # Apartments (2nd Floor)  
3100 # Apartments (3rd Floor)  
4100 # Apartments (4th Floor)
- B** = Community Center (Door 1)  
**1st Floor:** West Front Desk Reception / Reading Room /  
Billiard's Room / Pool & Fitness Center / Wellness Office  
/ Therapy / Springfield's at Bethany's Restaurant /  
Collegiate Café / ATM  
**2nd Floor:** Clinic / Computer Lounge / Pharmacy /  
Multipurpose Room
- C** = The Oaks Skilled Nursing (Door 30)  
Healing Garden
- D** = Maplewood Assisted Living (Door 21)  
101-130 # Apartments Golden Maple  
Memory Support (1st Floor)  
201-235 # Apartments Sugar Maple (2nd Floor)  
301-335 # Apartments Maple Town (3rd Floor)
- E** = West Cottage & Estate Homes  
851-855 Sheely Lane  
  
1 5233-5238 Sassafras Court  
2 5241-5246 Magnolia Court  
3 5251-5256 Cypress Court  
4 5261-5268 Spruce Court  
5 5271-5278 Sycamore Court  
6 5281-5286 Dogwood Court  
7 5291-5298 Cherry Tree Court



## East Campus

- F** = East Front Desk Reception / ATM /  
John & Annie's Bistro & Clyde's Pub
- G** = **1st Floor:** Administrative Offices /  
Craft Room / Resident Life  
**2nd Floor:** Center Apartments 100-124  
Solarium / Guest Room  
Lower Floor: Facilities Office / Woodshop /  
Beauty Salon
- H** = Mailroom / Gift Shop / Library /  
Bank / Resident's Council Office
- I** = Court Apartments  
3100 # Apartments / Chapel (1st Floor)  
3200 # Apartments (2nd Floor)  
3300 # Apartments (3rd Floor)
- J** = Richard D. Rife Center
- K** = East Cottages  
200 Otterbein Drive  
201-314 Asbury Drive  
402-474 Bethany Drive  
501-515 Albright Drive  
601-612 Whitefield Drive

## Services & Amenities

- Landscaping and lawn care
- Interior and exterior maintenance
- Property taxes
- Fitness Center with pool, spa and massage room
- Springfield's at Bethany Restaurant
- Collegiate Café
- Gift Shop
- John & Annie's Bistro & Clyde's Pub
- Disc Golf and Mini Golf courses
- Scheduled transportation
- Community garden
- Richard D. Rife Center
- Library
- Woodworking shop
- Craft room
- Train rooms and outdoor garden
- Computer Center
- Billiards room
- Salon and barber services
- Social, cultural, and educational events
- Chapel and spiritual programs
- Full-service bank
- Clinic & Pharmacy
- 24/7 emergency response system
- Care coordination
- Guest lodge
- **Apartments** include utilities, basic cable TV and internet. Phone is not included.
- **Cottages** include trash pick-up and basic cable TV. Utilities, phone and internet not included.

## Entrance Fee Plans

Your one-time entrance fee – paid when you sign a contract with Bethany Village – guarantees your residence and access to services for your lifetime. No matter which Entrance Fee Plan you choose, you have the security of knowing that health care services are available to you. And, you have access to the Asbury Foundation's Benevolent Care program, which assists residents who outlive their financial resources through no fault of their own.

Why charge an entrance fee? Even though your residence here is maintenance-free, the community is not. Entrance fees help provide capital funds for upkeep, enhancements, and the wide range of services, programs, and staff that a well-run community requires. Bethany Village is part of Asbury Communities. With Fitch-rated bonds and strong reserves, Asbury's financial strength is an important benefit we bring to residents.

**Standard Plan:** Entrance fees are partially refundable during the first 50 months you live at Bethany Village. The refund decreases by 2% each month of residency, until after 50 months, there is no refund. Because this plan offers the lowest entrance fees, it is the most affordable way to enjoy our lifestyle.

**50% Refundable Plan:** With this plan, you receive half your entrance fee, payable to you or to your estate, at the time you are no longer a resident at Bethany Village and have satisfied the terms of the Residency Agreement.\* This plan guarantees a partial return of your investment for a larger up-front fee.

**80% Refundable Plan:** With this plan, you receive 80 percent of your entrance fee, payable to you or your estate, at the time you no longer reside at Bethany Village and have satisfied the terms of the Residency Agreement.\* Again, the value of this choice is that you preserve your assets for the future in return for a larger up-front fee.

*\*Generally, the entrance fee is refunded when your residence is re-occupied by a resident who pays a new entrance fee. Specific terms are contained in the Residency Agreement.*

## About Asbury: A Legacy of Service

In 1999, Bethany Village joined with Asbury Communities, Inc., a leading not-for-profit system of continuing care retirement communities and related services that include pharmacy and therapy management. From its founding as a Methodist home for the aged in Gaithersburg, Md., in 1926, Asbury Communities has dedicated itself to redefining the expectations of aging services and has grown to serve thousands of older adults in multiple locations.

Asbury is a separate legal entity from the United Methodist Church, but we continue to honor our faith-based heritage with a focus on Mission and adherence to our guiding principle of doing all the good we can with integrity, transparency, and grace. However, Asbury's communities have intentionally evolved to be welcoming, affirming places for people of all backgrounds, cultures, beliefs, and abilities. We work hard to ensure that residents and associates at our communities feel accepted and celebrated for who they are.

---

**At Asbury, Anticipate More is not just a tagline.  
It's a promise we've been keeping for close to 100 years.**

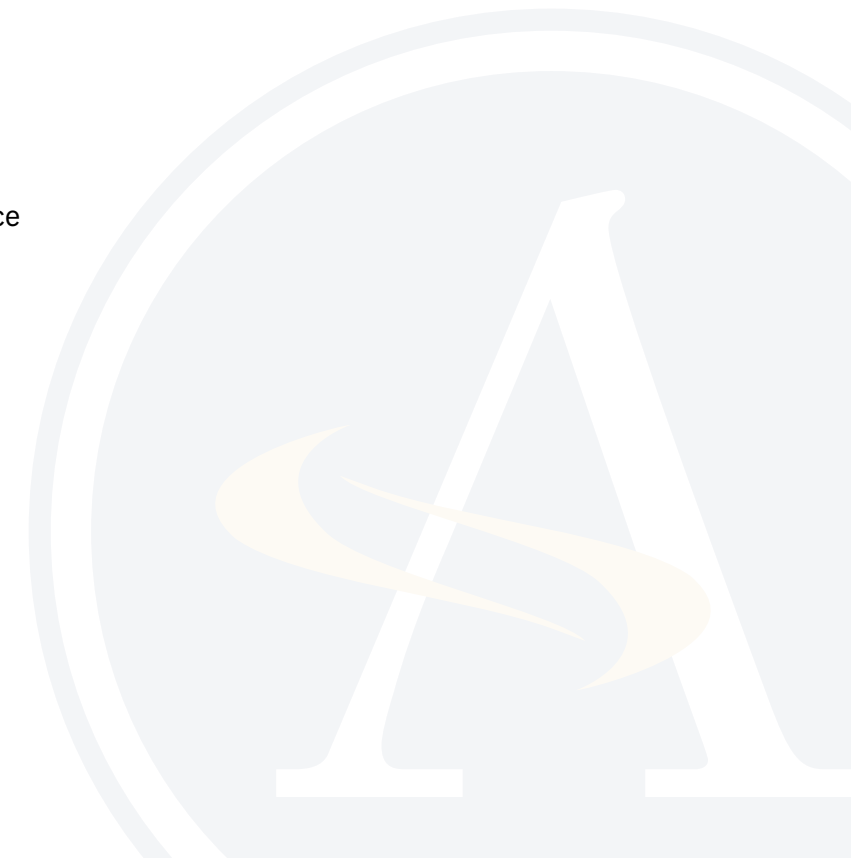
---

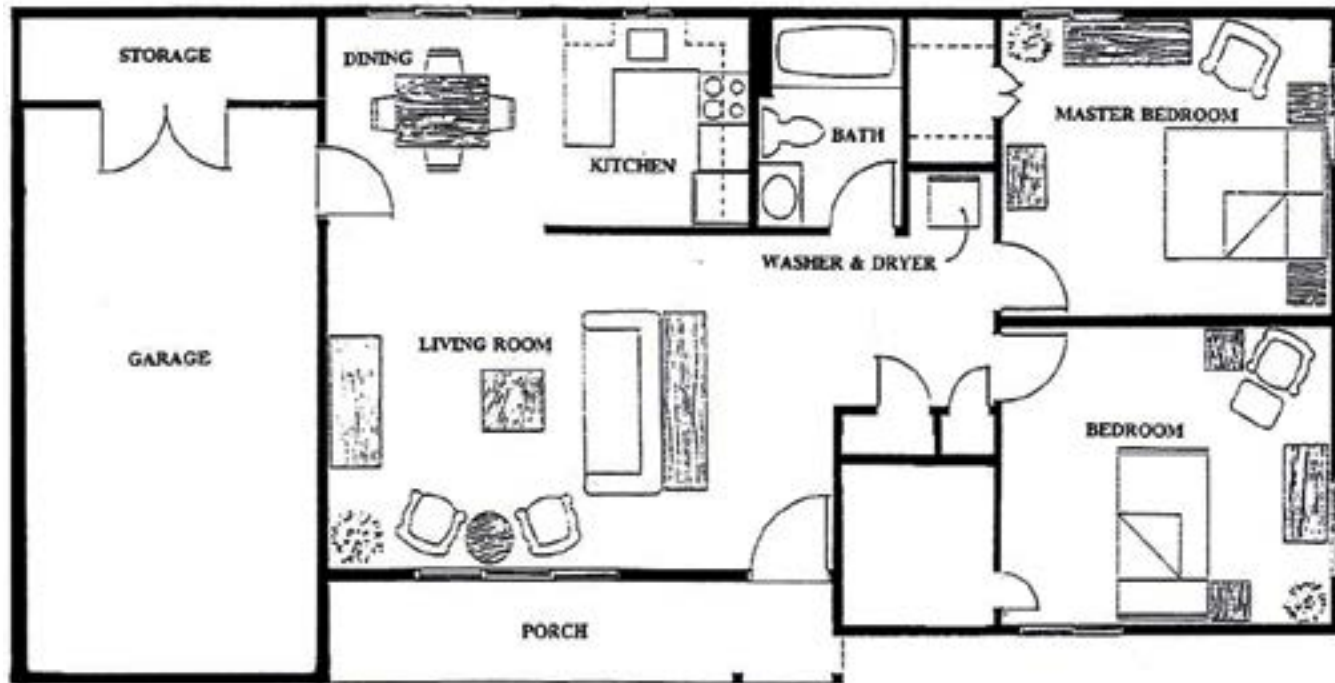
## Commitment to Excellence and Innovation

The Asbury organization is committed to financial strength and stewardship, operational excellence, and being a leading innovator in senior well-being. As part of that, Asbury holds EAGLE accreditation. This process includes onsite peer reviews and documentation of operational strength and continual improvement, financial soundness, and a focus on Mission in alignment with faith-based values.

Some accomplishments across our organization include:

- » Great Place to Work Certification
- » Fortune Top 40 Workplaces for Aging Services
- » United Methodist Association EAGLE Innovation Award
- » Planetree Gold Certification for Person-Centered Service
- » International Council for Active Aging Innovator Award
- » SAGECare Platinum Certification

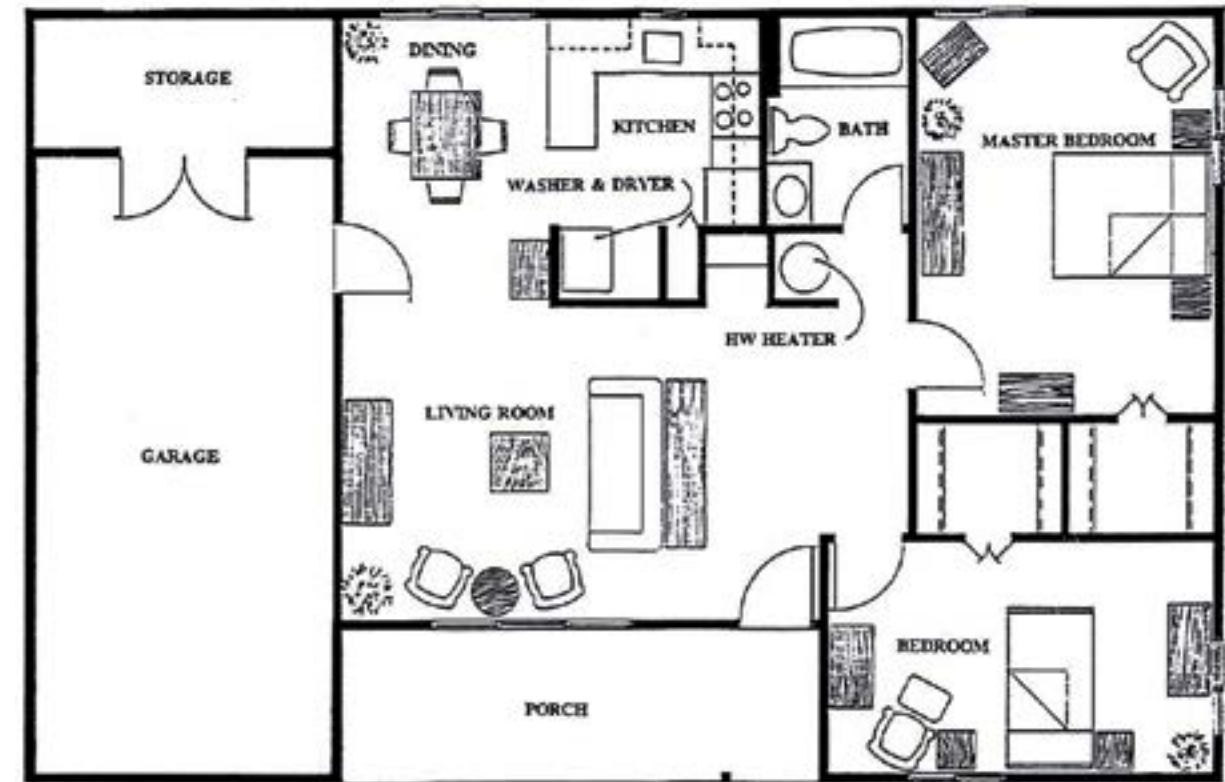




**Embury:** 920 - 1,316 sq. ft.\*  
2 BR, 1 BA\*\*

\*\*Extra features can include: full/half bathrooms, sunroom, carport, patio and fireplace

\*Square footage may vary based on modifications made over the years.



**Webb:** 920 - 1,316 sq. ft.\*  
2 BR, 1 BA\*\*

\*\*Extra features can include: full/half bathrooms, sunroom, carport, patio and fireplace

\*Square footage may vary based on modifications made over the years.

Embury

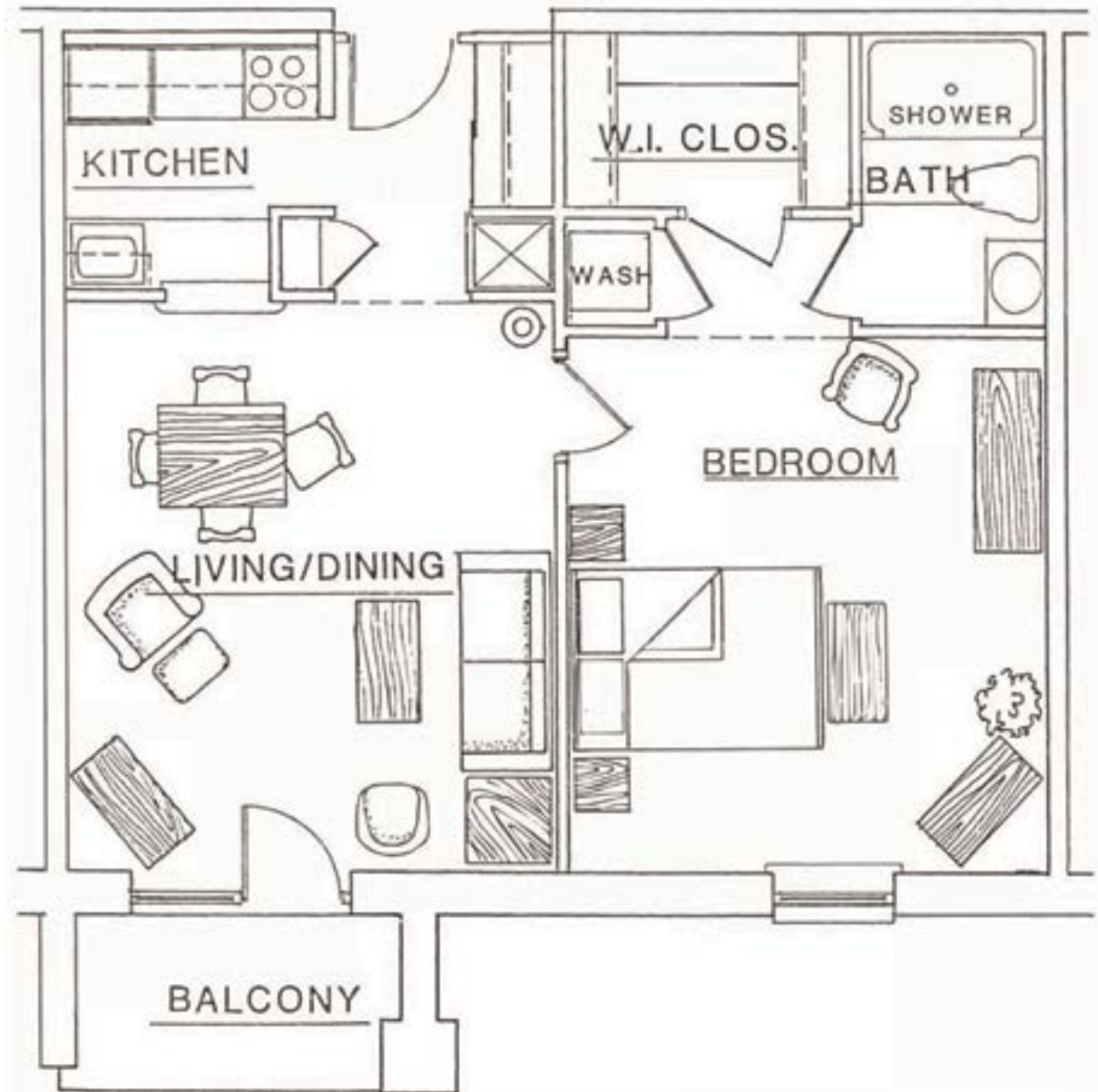
Webb



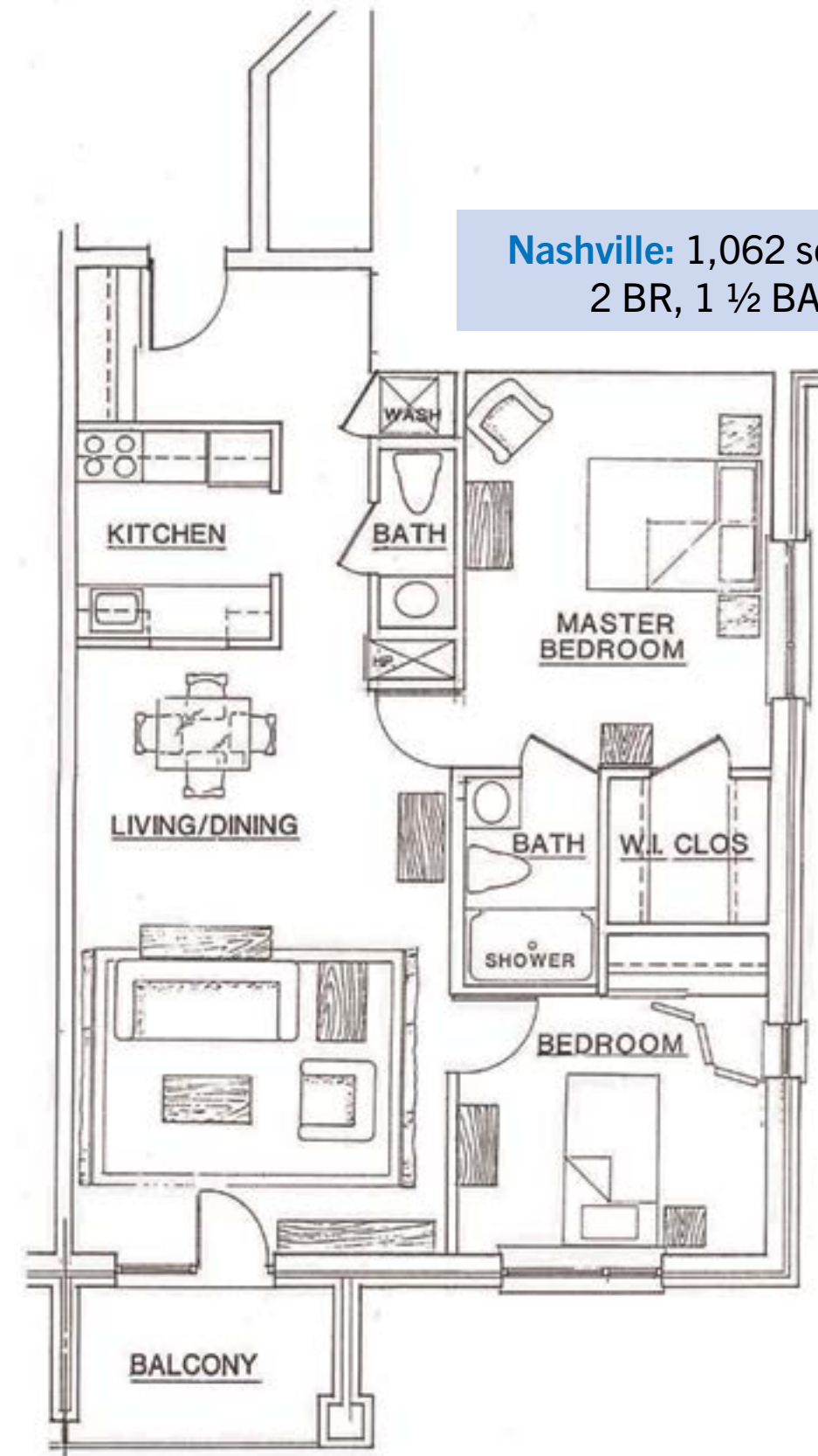
EAST COURT APARTMENTS | FLOOR PLANS

FLOOR PLANS | EAST COURT APARTMENTS

St. Simons: 700 sq. ft.\*  
1 BR, 1 BA



Nashville: 1,062 sq. ft.\*  
2 BR, 1 1/2 BA



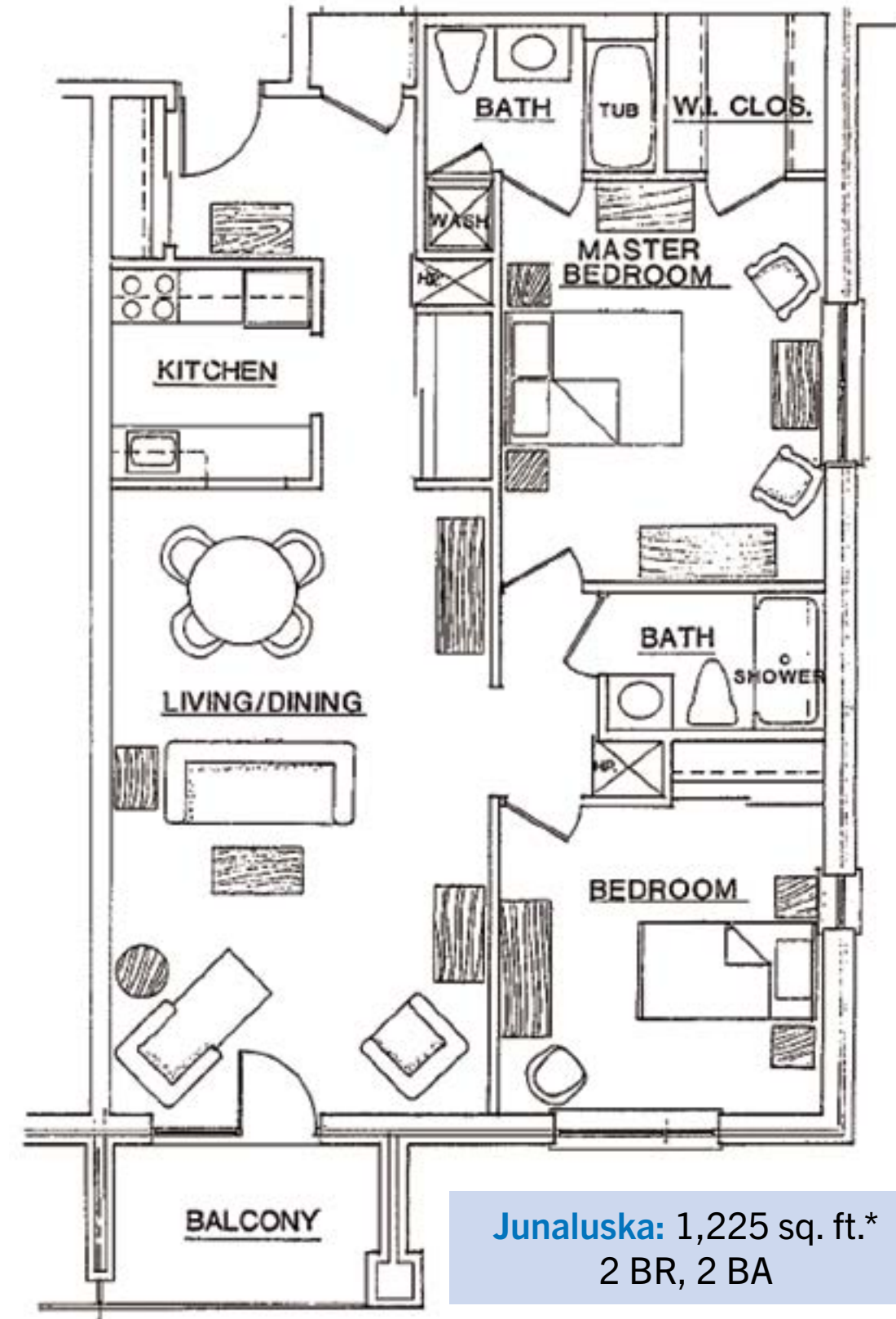
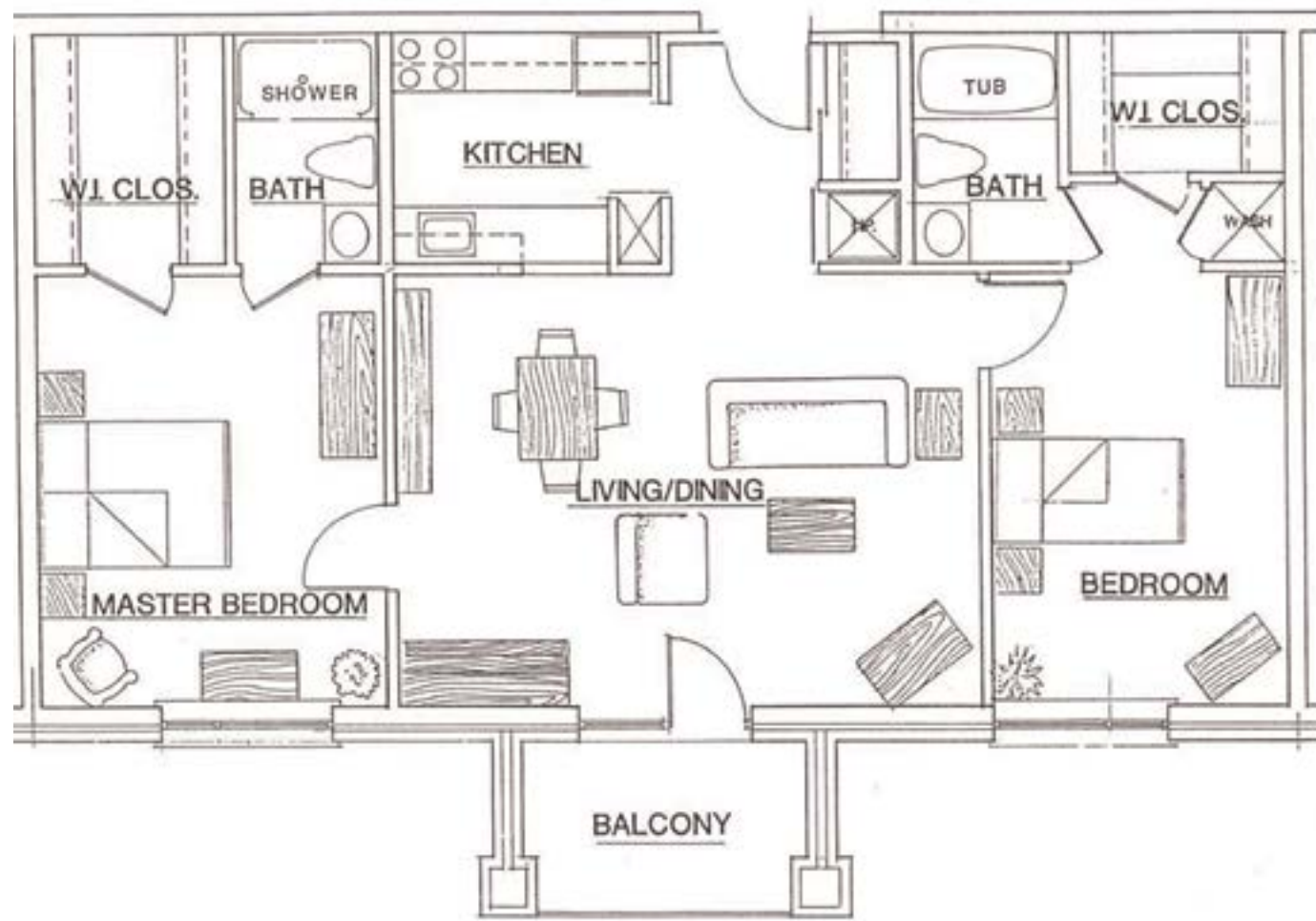
\*Square footage may vary based on unit location in building.

\*Square footage may vary based on unit location in building.

EAST COURT APARTMENTS | FLOOR PLANS

FLOOR PLANS | EAST COURT APARTMENTS

Dayton: 1,100 sq. ft.\*  
2 BR, 2 BA



Junaluska: 1,225 sq. ft.\*  
2 BR, 2 BA

\*Square footage may vary based on unit location in building.

\*Square footage may vary based on unit location in building.

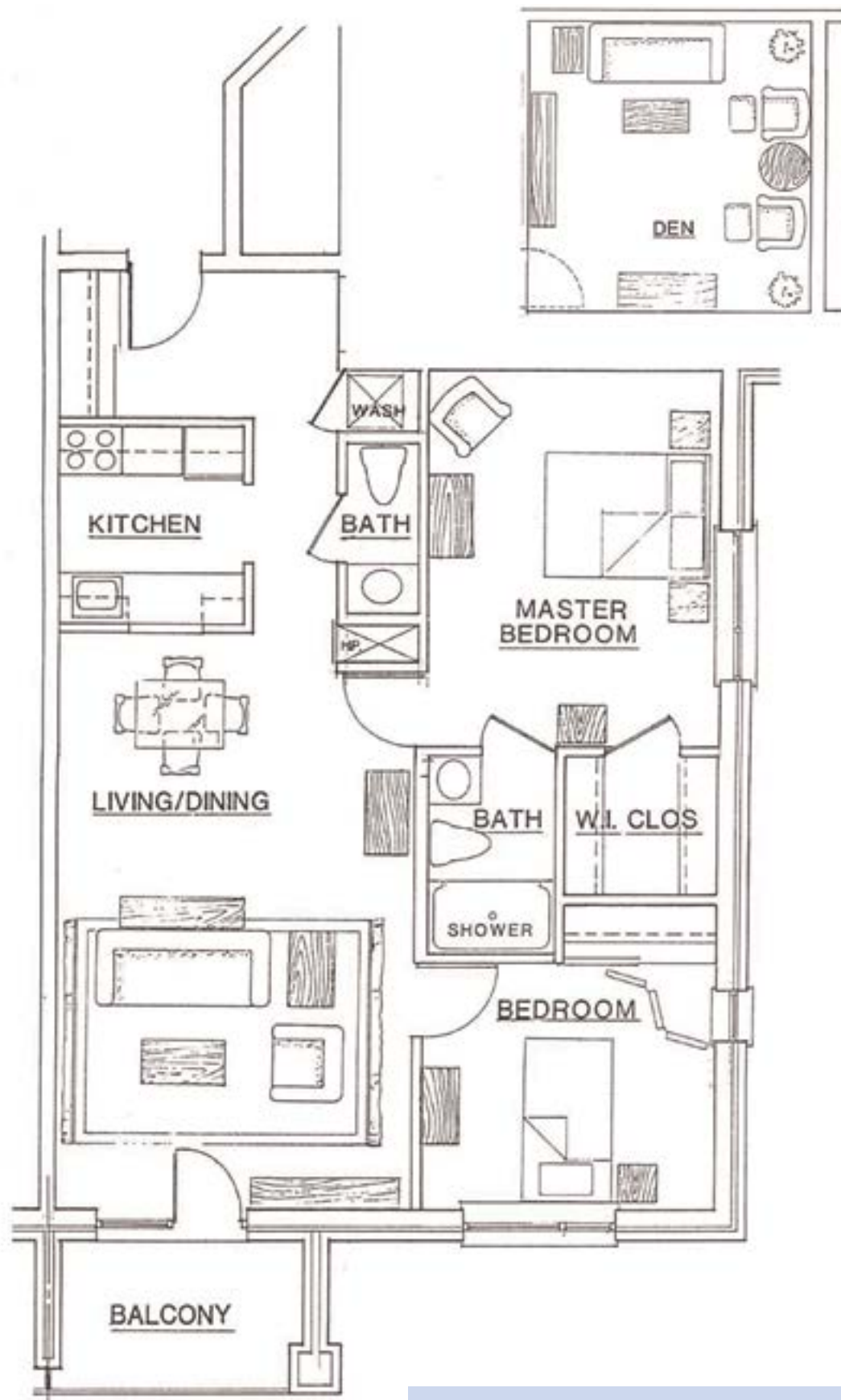
Dayton

Junaluska

EAST COURT APARTMENTS | FLOOR PLANS

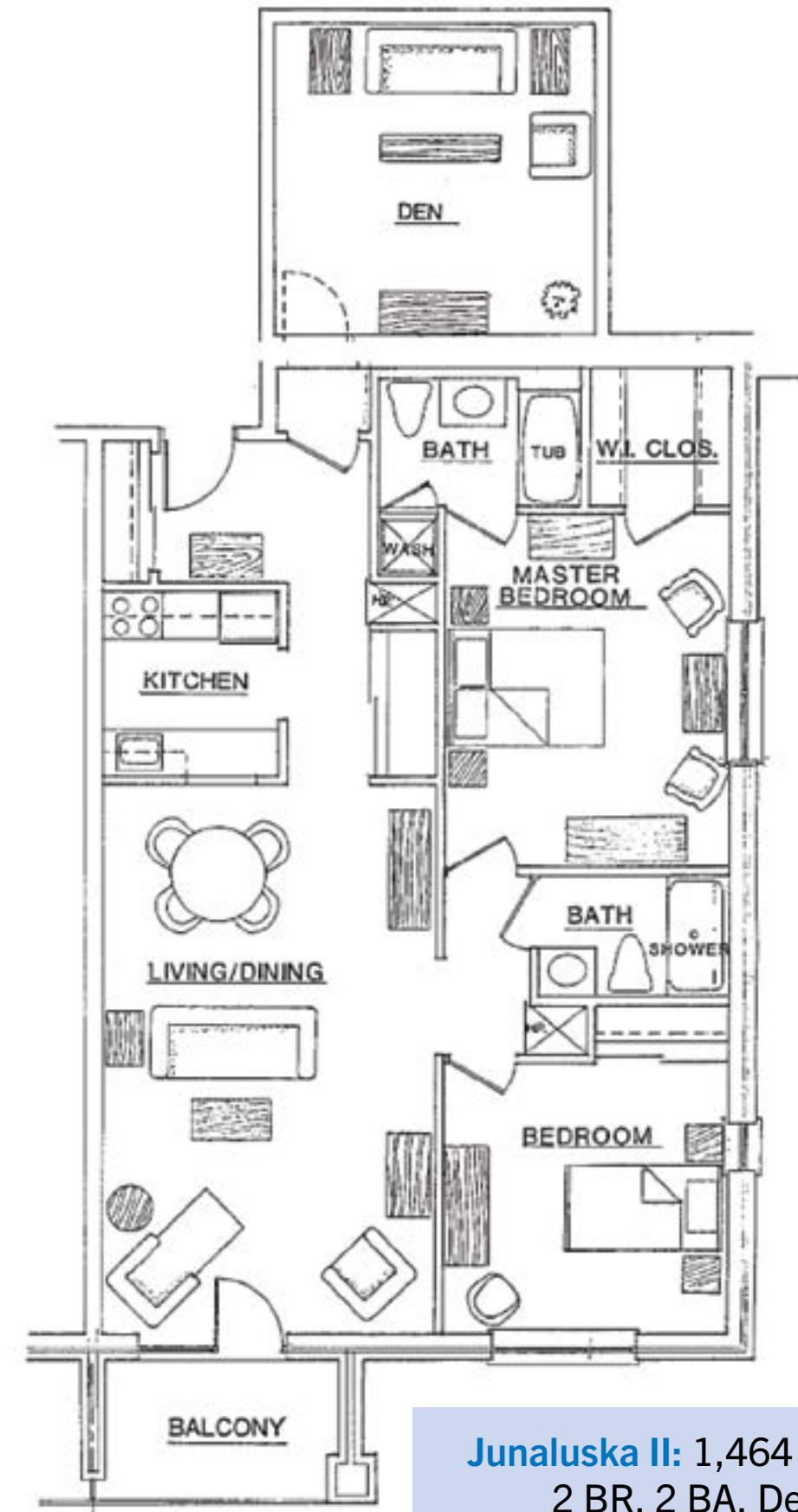
FLOOR PLANS | EAST COURT APARTMENTS

Nashville II



**Nashville II:** 1,300 sq. ft.\*  
2 BR, 1 1/2 BA, Den

Junaluska II

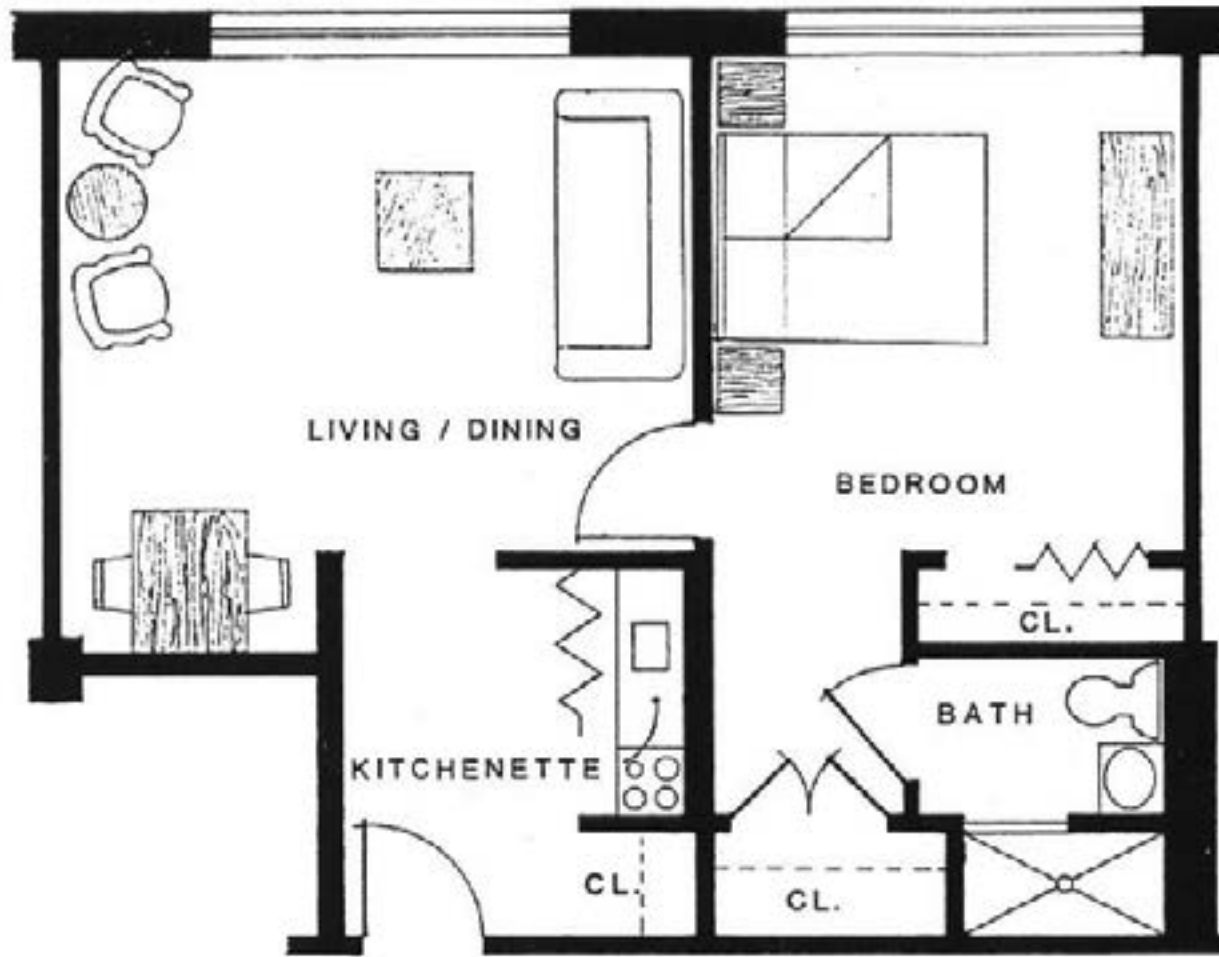


**Junaluska II:** 1,464 sq. ft.\*  
2 BR, 2 BA, Den

\*Square footage may vary based on unit location in building.

\*Square footage may vary based on unit location in building.

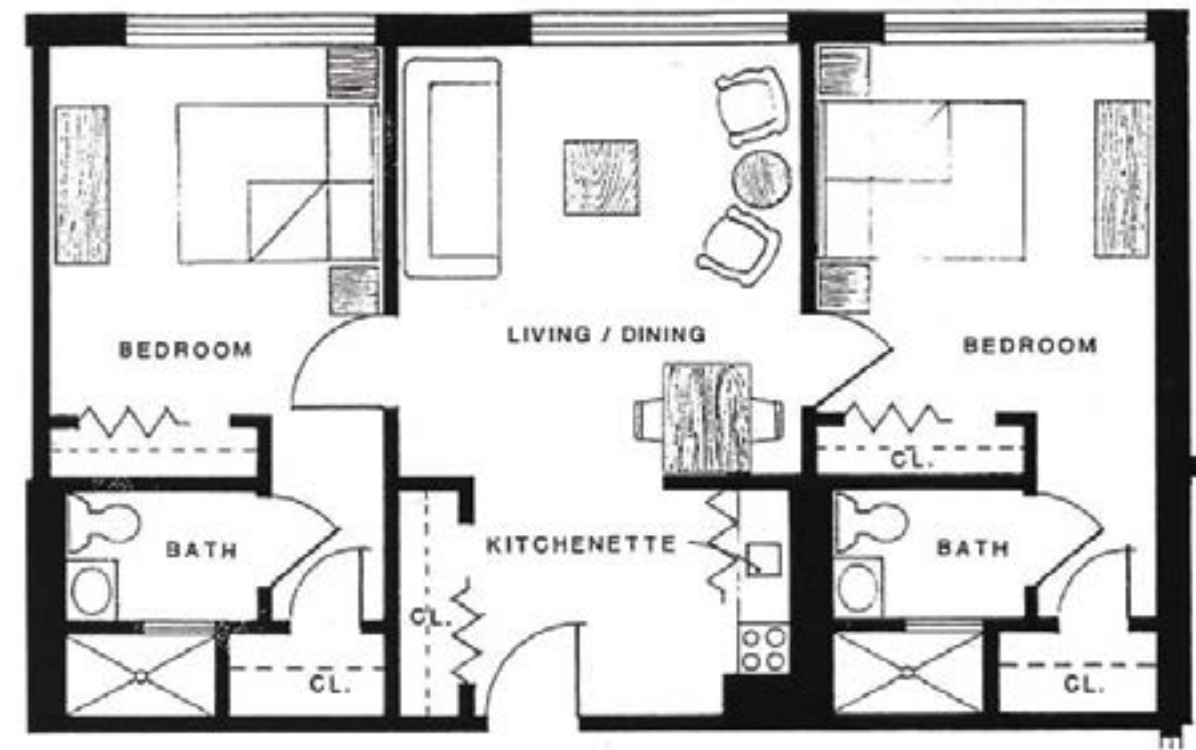
Oxford



Oxford: 580 sq. ft.\*  
1 BR, 1BA

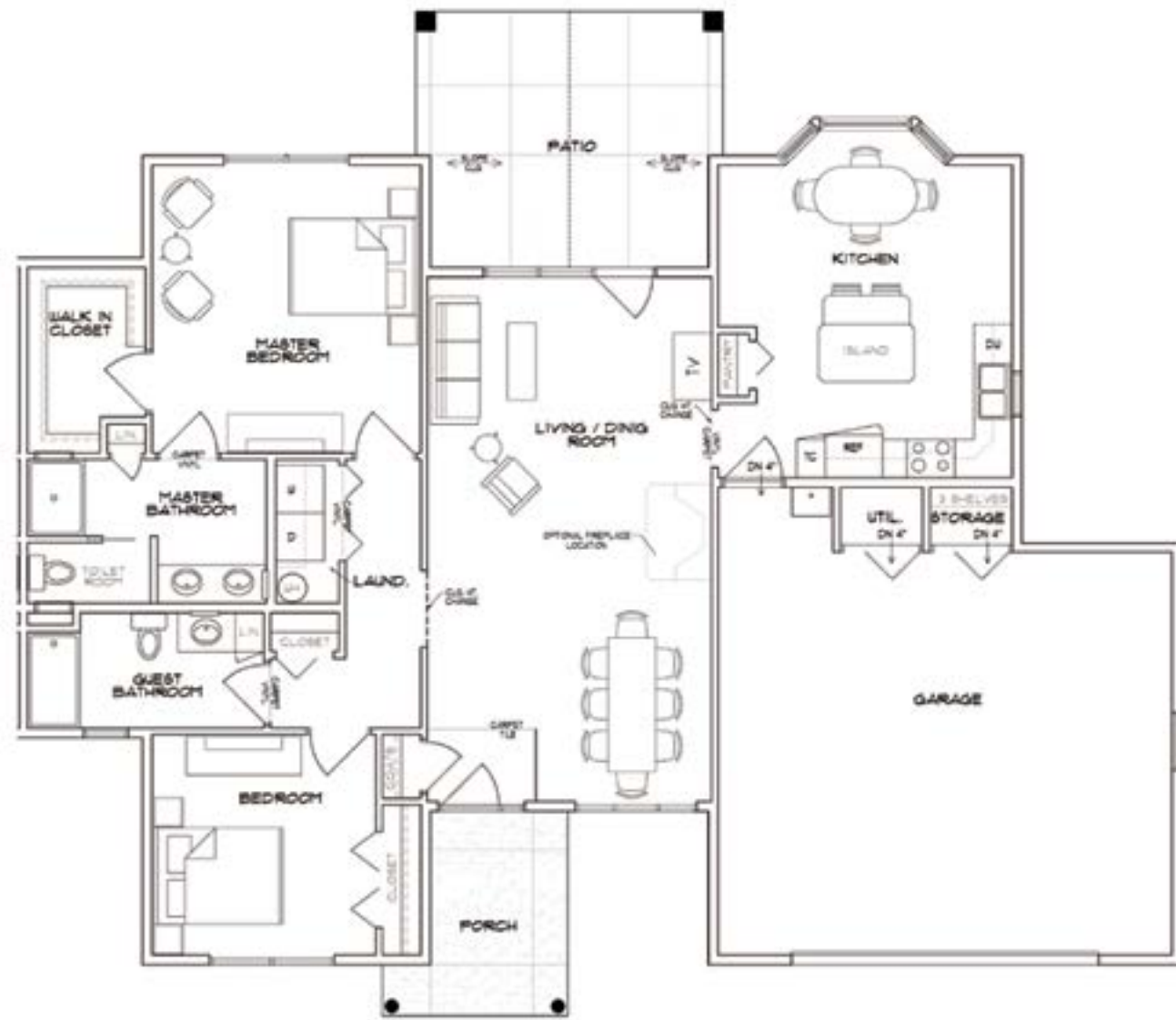
\*Square footage may vary based on unit location in building.

Strawbridge



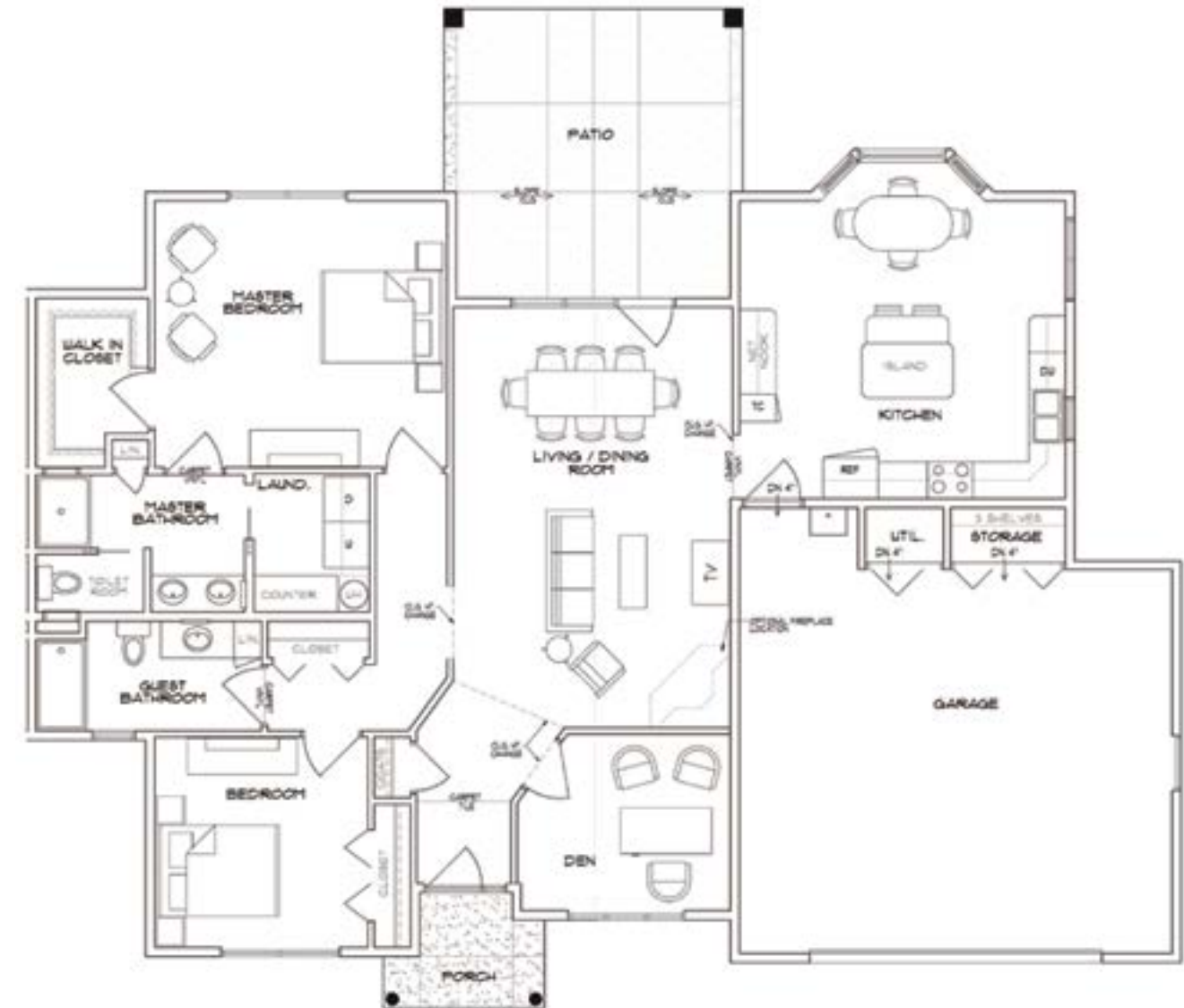
Strawbridge: 720 sq. ft.\*  
2 BR, 2 BA

\*Square footage may vary based on unit location in building.



**Aspen:** 1,420 sq. ft.\*  
2 BR, 2 BA\*\*

\*\*Extra features can include: sunroom and fireplace



**Hickory:** 1,620 sq. ft.\*  
2 BR, 2 BA, Den\*\*

\*\*Extra features can include: sunroom and fireplace

\*Square footage may vary based on modifications made over the years.

\*Square footage may vary based on modifications made over the years.

Aspen

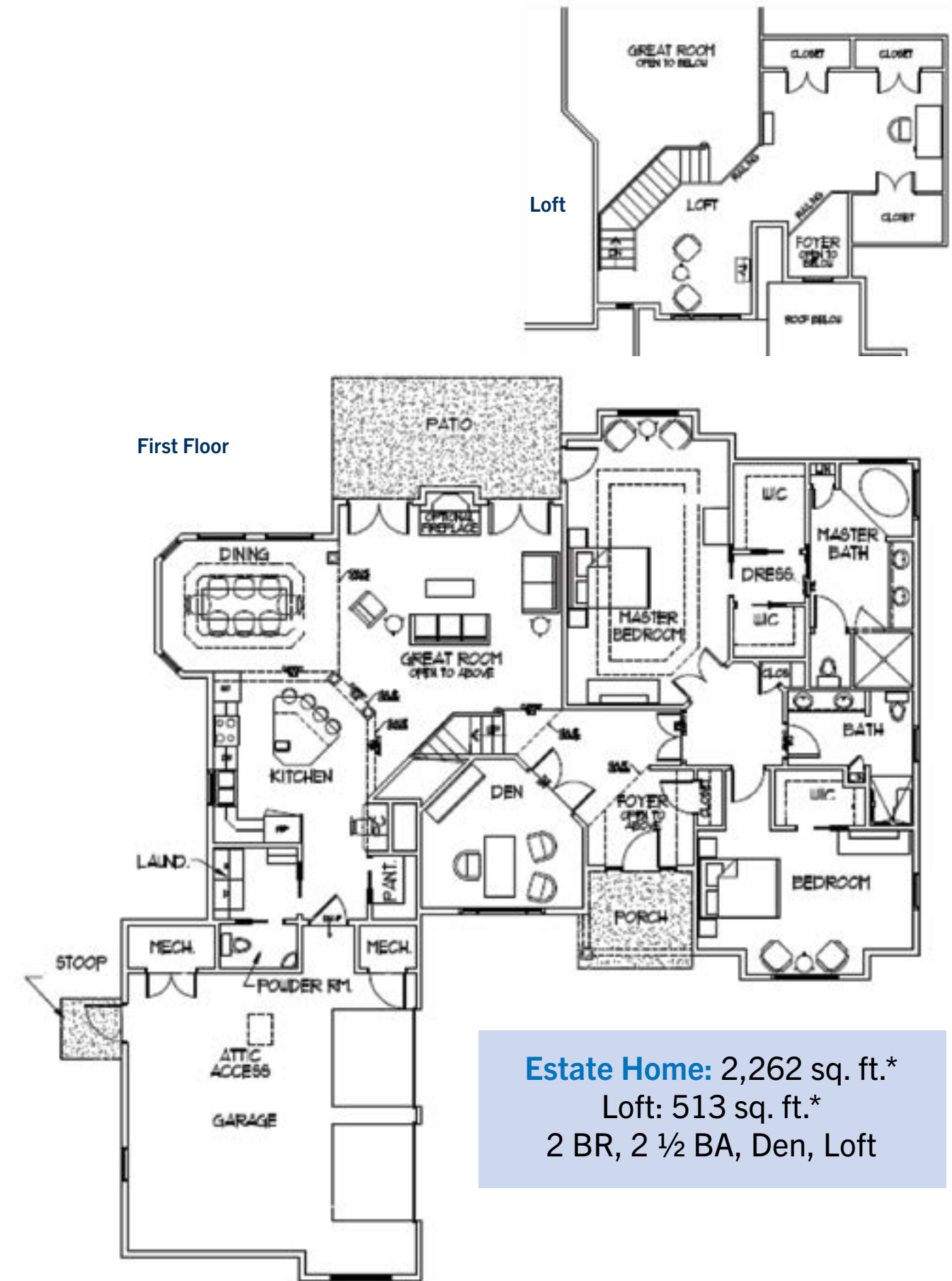
Hickory



**Chestnut:** 1,836 sq. ft.\*  
2 BR, 2 BA, Den\*\*

\*\*Extra features can include: sunroom and fireplace

\*Square footage may vary based on modifications made over the years.



**Estate Home:** 2,262 sq. ft.\*  
Loft: 513 sq. ft.\*  
2 BR, 2 ½ BA, Den, Loft

\*Square footage may vary based on modifications made over the years.

**Penn:** 875 sq. ft.\*  
1 BR, 1 BA, Den



**Eisenhower:** 1,025 sq. ft.\*  
1 BR, 1 ½ BA, Den



\*Square footage may vary based on unit location in building.

\*Square footage may vary based on unit location in building.

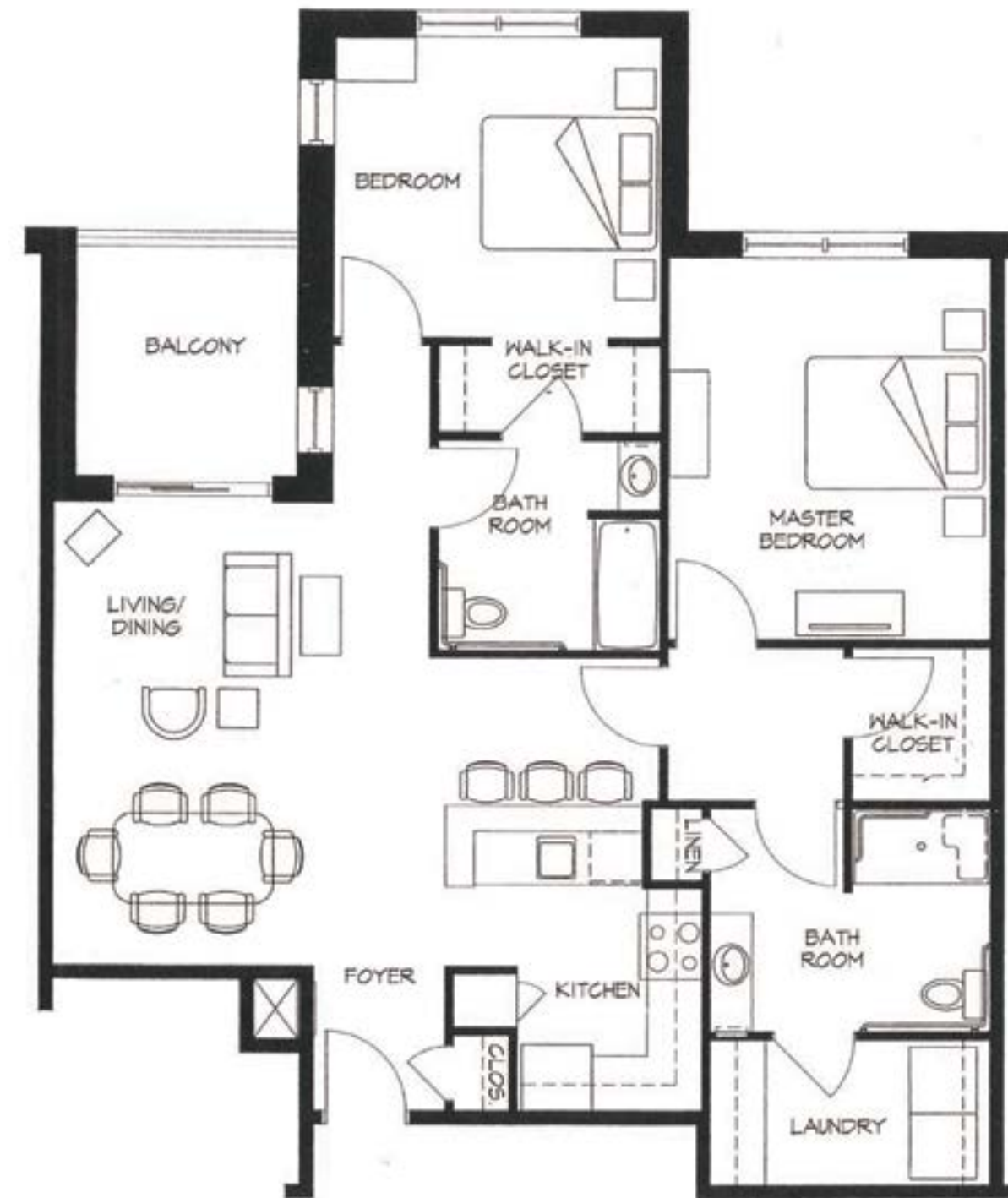
Meade



**Meade:** 1,025 sq. ft.\*  
2 BR, 2 BA

\*Square footage may vary based on unit location in building.

Carnegie



**Carnegie:** 1,085 sq. ft.\*  
2 BR, 2 BA

\*Square footage may vary based on unit location in building.

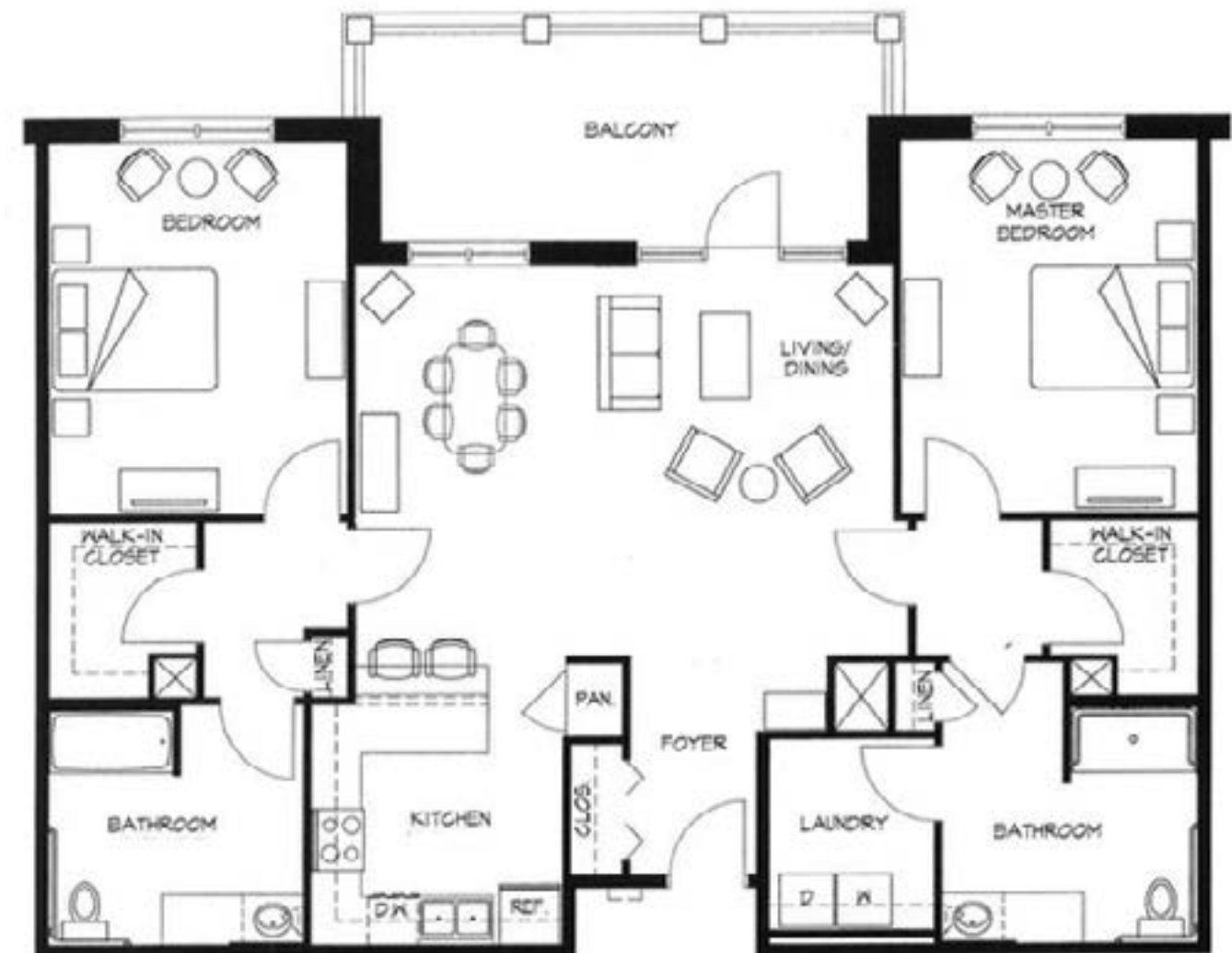


Marshall



**Marshall:** 1,173 sq. ft.\*  
2 BR, 2 BA, Den

Buchanan



**Buchanan:** 1,290 sq. ft.\*  
2 BR, 2 BA

\*Square footage may vary based on unit location in building.

\*Square footage may vary based on unit location in building.

## WEST APARTMENTS | FLOOR PLANS



**Franklin:** 1,354 sq. ft.\*  
2BR, 2BA, Den

\*Square footage may vary based on unit location in building.

Franklin



**Bethany Village**  
325 Wesley Dr.  
Mechanicsburg, PA 17055

Main Reception: (717) 766-0279